

ACERO Frameless Stall Shower Enclosure

AS-48T-38, AS-54T-38, AS-60T-38



GLASSCRAFTERS INC.

All Units are available in Polished Stainless Steel, Brushed Stainless Steel or Iron-Black (add "PSS", "BSS" or "IBK" to model code)

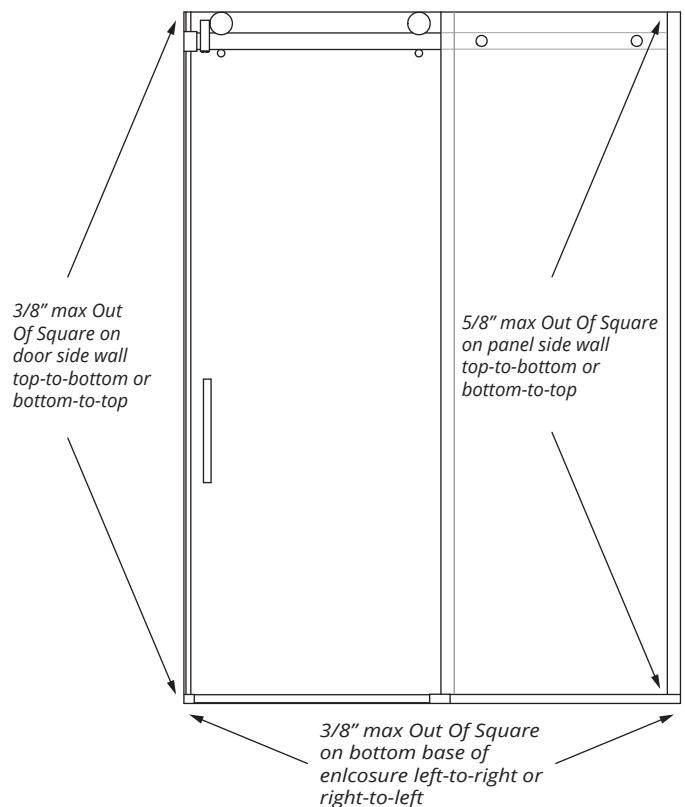
Cleartek™ (Low-iron) glass is a super clear glass with significantly less color than standard clear glass, but is not color free. The larger the panel, the more noticeable the tint in the glass, especially on the edges.

Acceptable Out Of Square (OOS) conditions:

For bottom base opening, 3/8" OOS from left to right

For wall that accepts stationary panel, up to 5/8" OOS

For wall that accepts door panel, up to 3/8" OOS



Standard Features:

- Tubular 1-5/8" x 1/2" stainless steel rail
- Sliding door technology: stainless steel rollers with concealed ball bearings
- Durable and long-lasting stainless steel hardware, including all channels and handle
- 10" standard, rectangular ladder handle (6" center to center hole location)
- 3/8" Cleartek™ (low-iron) & Standard Clear, tempered safety glass.
- U-channel at base and vertical side of panel
- EnduroShield® protective glass coating
- Stainless steel watertight curb dam
- Fully reversible left and right assembly
- High quality vinyl door bumper and sweep

Design and ordering for left hand or right hand door is not required as parts are reversible.



- All Stainless Steel Hardware
- Cleartek™ (Low-Iron) or Standard Clear Glass
- Protective Glass Coating



SHOWER ENCLOSURES MODELS: (All stall units are 76" high)

AS-48T-38 45" to 48" opening with 18" to 21" walk through

AS-54T-38 51" to 54" opening with 21" to 24" walk through

AS-60T-38 57" to 60" opening with 24" to 27" walk through

GLASSCRAFTERS, INC.
193 Veterans Blvd. Carlstadt, NJ 07072
1+ (888) 683-1362 (F) 1+ (201) 525-1117
sales@glasscraftersinc.com

Distinctive Designs for Selective Tastes

ACERO Frameless Stall Shower Enclosure

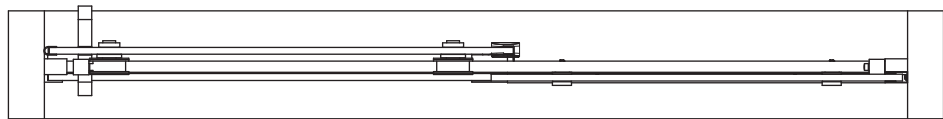
AS-48T-38, AS-54T-38, AS-60T-38

All Units are available in Polished Stainless Steel, Brushed Stainless Steel or Iron-Black (add "PSS", "BSS" or "IBK" to model code)

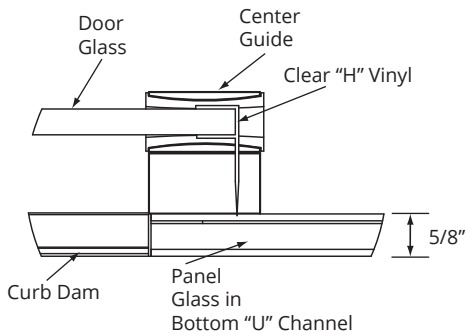


GLASSCRAFTERS INC.

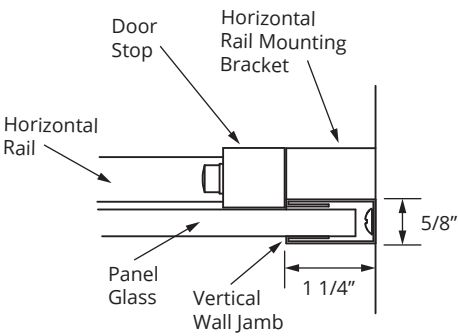
Detail — Top View, Installed, Closed Position



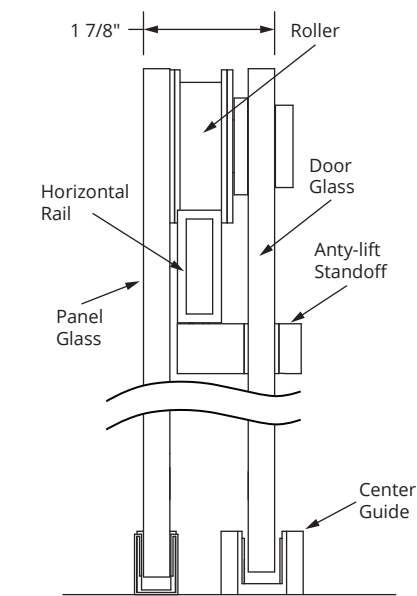
Detail — Top View, Closed Position



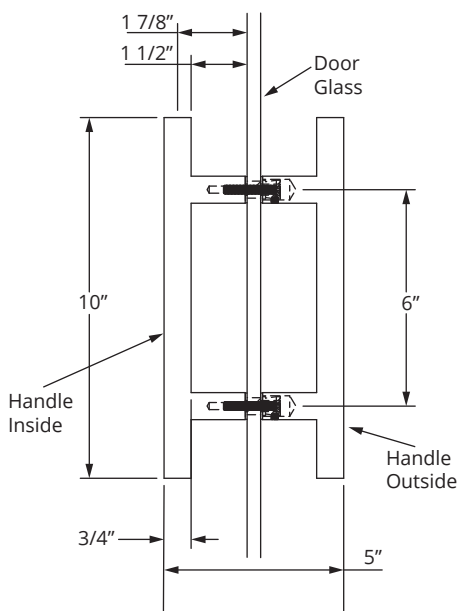
Detail — Top View



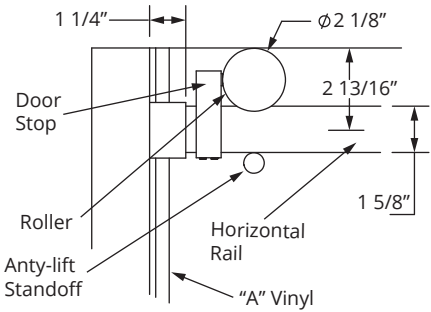
Detail — Section Side View Installed



Detail — Ladder Handle



Detail — Inside View, Rail with Roller



Cleartek™ (Low-iron) glass is a super clear glass with significantly less color than standard clear glass, but is not color free. The larger the panel, the more noticeable the tint in the glass, especially on the edges.

GLASS & HARDWARE



Clear (Standard) Glass



Cleartek™ (Low-Iron) Glass



Ladder Handle

DECORATIVE HARDWARE FINISH OPTIONS



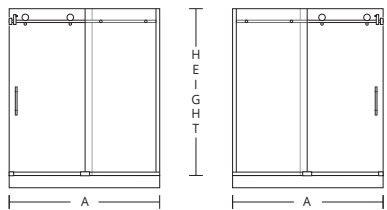
Brushed Stainless Steel (BSS)



Polished Stainless Steel (PSS)



Iron-Black (IBK)



Refer to the chart below to select the model number that fits the Width (A) for your installation.

Height is 76" — 3/8" glass

Model Number	Width (A) Min-Max	Overlap Max - Min	Walk Through Min-Max
AS-48T-38	45" to 48"	4" to 1"	18" to 21"
AS-54T-38	51" to 54"	4" to 1"	21" to 24"
AS-60T-38	57" to 60"	4" to 1"	24" to 27"

FOR BEST RESULTS Glasscrafters recommends the installation be performed by a trained installer.

WARNING: TO INSTALL ON CAST IRON, FIBERGLASS, ACRYLIC OR RESIN SHOWER BASE Check with the tub or shower base manufacturer to determine the tooling required.

INSTALLING
THESE UNITS
REQUIRES
2 PERSONS

GLASSCRAFTERS, INC.
193 Veterans Blvd. Carlstadt, NJ 07072
1+ (888) 683-1362 (F) 1+ (201) 525-1117
sales@glasscraftersinc.com

Distinctive Designs for Selective Tastes